

**Don't just cover it...
*help it heal.***


Moisture without
maceration.




THERAGAUZE™
Absolutely Non-Stick Moist Wound Care

TheraGauze™ ...
SMRT design...

**Moisture without
maceration.**


Soluble

Systems®

The Problem: Moisture Control

Moisture control is a critical element of wound healing. Dry, desiccated wounds quickly become necrotic, compromising angiogenesis. Conversely, wounds that are too moist show localized maceration, leading to dermal layer separation and increasing the risks of skin sloughing and infection.

“TheraGauze was an absolute joy to apply because it did not stick, and the patient felt instant comfort with the application.”

— Arnold Beresh, DPM,
Peninsula Foot and Ankle
Specialist, PLC, Newport
News, Virginia

The Solution:

TheraGauze is designed to dynamically release or absorb moisture based on the underlying condition of the wound, facilitating healing.

The Problem: Dressings that Stick

Most traditional gauze dressings stick tenaciously to wound exudates, integrating into early formative scabs. Dressing changes often tear apart partially healed epithelial tissue, reversing days of healing and causing unnecessary pain for patients.

“It got to the point that I looked forward to putting [TheraGauze] on. It’s cool, it’s soothing, it just feels like it’s healing. I think it’s a miracle product.”

— Mike Burnett, who suffered second- and third-degree burns on his hand, arm, neck, and face during a gasoline explosion

The Solution:

TheraGauze can easily be separated from the wound site with no picking, peeling, or scraping. *It will not stick when kept moist.*

The results speak
for themselves:

Why choose TheraGauze as your first choice for a wound-care product?

Because TheraGauze delivers what you want and what your patients need:

- Balanced moisture control
- High oxygen permeability
- Compatibility with most medications
- Biological inertness
- Excellent mechanical stability
- Long-lasting effects—remains moist and active for several days



With TheraGauze, you don't have to worry about:

- **Maceration:** TheraGauze wicks away exudates from wound surfaces.
- **Wound adherence:** If kept moist, TheraGauze's unique formulation guarantees it won't stick to the wound.
- **Pain:** Dressing changes are a breeze, because TheraGauze won't adhere to the wound.
- **Residue at wound site:** Because TheraGauze maintains its structural integrity, you will never find bits of the dressing in your patient's wound.
- **Frequent dressing changes:** Because TheraGauze remains moist and active for several days, your patients require fewer dressing changes.



*Partial calcaneotomy
and primary closure
for a chronic
wound secondary
to a superficial
osteomyelitis of
the calcaneus*



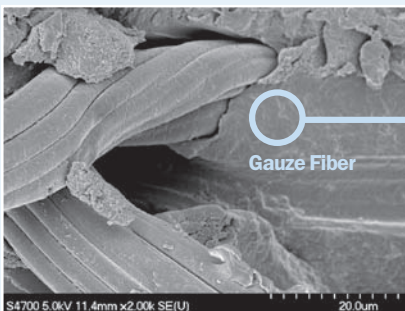
*Dehiscid wound
achieved total closure
within 5 weeks after
TheraGauze™ use*

TheraGauze is your best choice for multiple wound types, including:

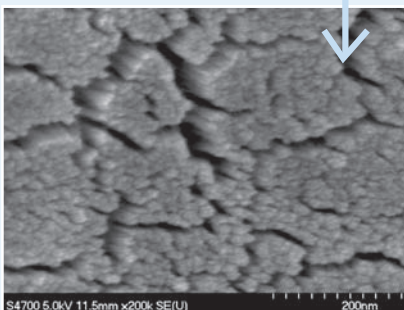
- Diabetic foot ulcers
- Burns
- Blistering lesions
- Pressure sores
- Split thickness skin grafts (donor and recipient sites)
- Complex skin flaps
- Wounds with a high risk of scarring

“TheraGauze helps my diabetic foot ulcer patients heal faster and decreases the need for pain medication.”

*— Adam Landsman, DPM, PhD,
Assistant Professor of Surgery,
Harvard School of Medicine*



SEM of moisture control dressing, (2000X) shows polymer held in place by gauze fibers.



At 200,000X the polymer contains a series of "straws" & canals which act like capillaries at the cellular level to regulate fluid content across the wound surface.

The Technology Behind the Product

TheraGauze **S**kin **M**oisture **R**ebalancing **T**echnology (**SMRT**) is a proprietary inert breathable polymer integrated into a nonwoven polyester/rayon substrate. These unique attributes facilitate balanced moisture control, pushing fluids and oxygen to the wound surface while simultaneously pulling exudates away. Unlike other dressings, the fluid balance provided by TheraGauze occurs at the wound surface, rather than within the dressing.

What does this mean for your patients?

The best possible care.

TheraGauze: the absolutely nonstick, moist, wound-care dressing that works.



Soluble Systems®

Take the right first step
towards wound closure.



Easy On/Easy Off

Directions for Use:

1. Cleanse wound and dry area around wound.
2. Remove TheraGauze dressing from foil package.
3. If necessary, cut TheraGauze dressing so it extends at least a quarter inch beyond wound margins.
4. Place TheraGauze dressing (full size or trimmed) over wound.
5. Cover TheraGauze dressing with breathable, transparent adhesive bandage or other dressing of choice.

To Remove:

If moist, simply grasp one edge of the TheraGauze dressing and slowly lift from skin and wound site. If dry, apply saline solution and remove after 1 minute. For heavily exudating/bleeding wounds and graft sites, keep TheraGauze moist for non-stick removal.

Further instructions for Use:

For more information on how to use TheraGauze please see www.solublesystems.com

CAUTION:

*TheraGauze is **not** to be used on dirty, contaminated, bleeding, or infected wounds. If signs of infection occur, such as fever, pain, redness, swelling, itching, or burning, take appropriate measures.*

12050 Jefferson Avenue, Suite 250, Newport News, VA 23606

757-877-8899  solublesystems.com